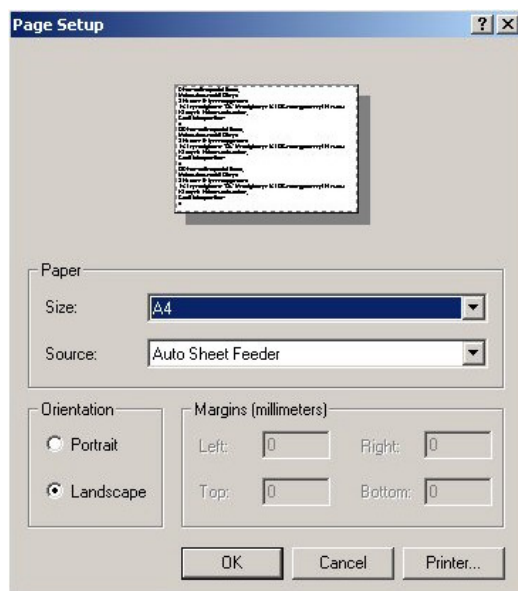
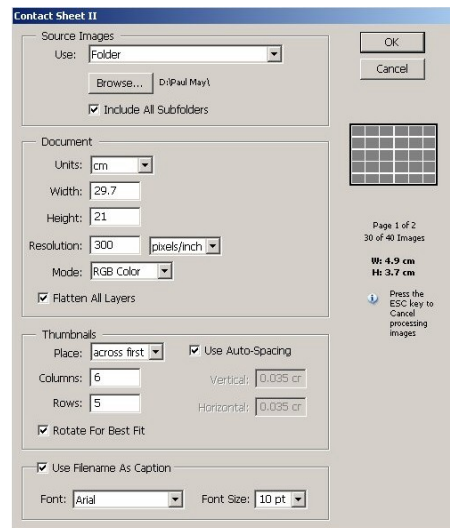


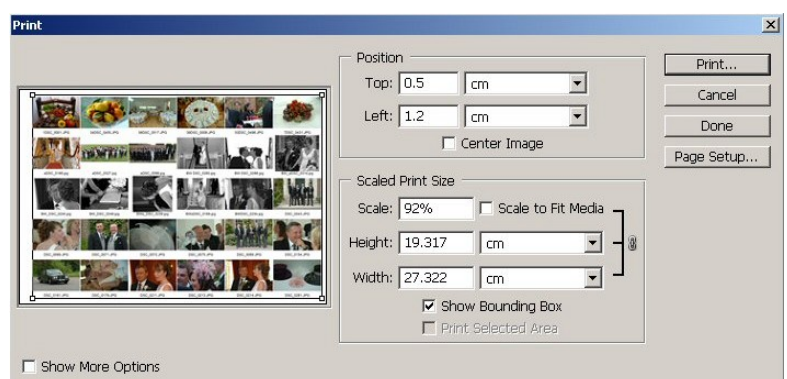
Contact sheet printing with Adobe Photoshop (Manhattan Album)

1. Open Adobe Photoshop. In the 'file' menu go to 'automate' and select 'Contact Sheet II'. Ensure 'Document' Width and Height dimensions are set as shown.



2. After creating contact sheets in the 'file' menu select 'page setup' and set 'paper size' to custom and 'orientation' to portrait. Also from this dialogue box select 'printer' and set page size using your printer settings menu to A4.

3. From the 'file' menu select 'print with preview' and ensure that the 'position' and 'scaled print size' settings are as shown.
Position Top: 0.5cm
Position Left: 1.2cm
Scale: 92%



4. Ensure that the Spaark sheets are loaded in the printer with the pre-punched holes on the leading edge of the page. If your printer has a page rotate function you may prefer to use this. In this case feed the sheets into the printer with the pre-punched holes on the trailing edge of the page.