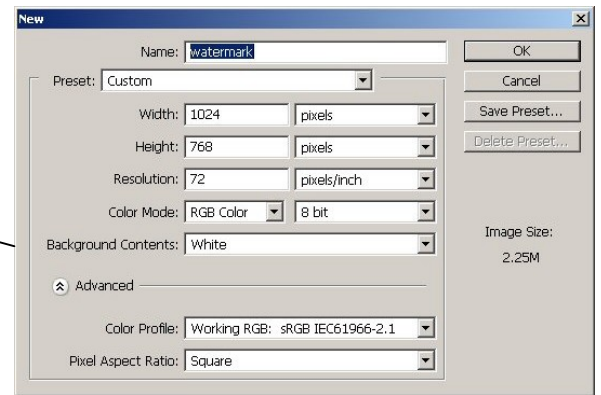


create your own watermark

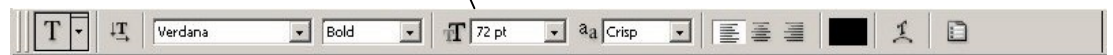
1. Open Adobe Photoshop. In the 'file' menu go to 'new' and select the settings as shown as shown.



2. Select the 'type' tool and click on your new page to add text.



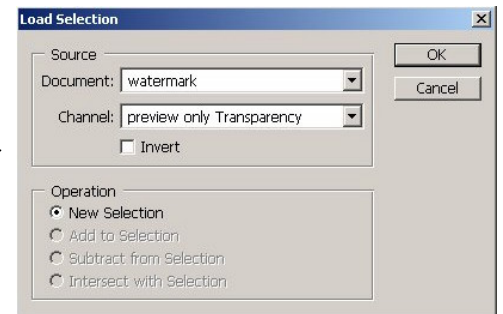
3. Type in your text and adjust to the size, colour and font style required.



4. Select the 'move' tool from the Tool palette and position the text on the page.



5. In the top menu go to 'select'. From the menu go to 'load selection' and click OK with the settings shown.



6. From the Tool palette select 'Edit in Quick Mask Mode'.

7. From the top menu select 'file' and 'save as' from the menu. File should be saved in TIF format with the settings as shown. Ensure save options 'save as a copy' and 'alpha channels' are selected with LZW compression on. File should be saved into 'Borders' folder of Spaark Photoprintables program folder.

